



NEDGROUP
INVESTMENTS

QUARTERLY REPORT

NEDGROUP INVESTMENTS XS GUARDED FUND OF FUNDS

as at 31 March 2019

See money differently

QUARTERLY REPORT: NEDGROUP INVESTMENTS XS FUND OF FUNDS

as at 31 March 2019



Domestic asset class returns (ZAR)



SA EQUITY



5.0% 1 year

5.7% 3 years

12.3% LT ave

Global sentiment and commodity prices drove up the index

SA PROPERTY



-5.7% 1 year

-3.8% 3 years

11.8% LT ave

Weak sector fundamentals reflected in recent company results

SA BOND



3.5% 1 year

10.1% 3 years

6.9% LT ave

The positive unchanged decisions by both the SARB and Moody's

SA CASH



6.6% 1 year

6.8% 3 years

5.9% LT ave

Rates remained unchanged



Global asset class returns (USD)



GLOBAL EQUITY



3.2% 1 year

11.3% 3 years

8.5% LT ave

A shift in central bank policy guidance sprang life back to risk assets

GLOBAL PROPERTY



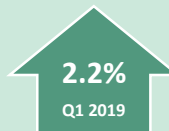
14.3% 1 year

6.7% 3 years

6.7% LT ave

Global REITs supported by falling government bond yields

GLOBAL BOND



-0.4% 1 year

1.5% 3 years

4.6% LT ave

Relatively lower performance as rate expectations changed

US CASH



2.5% 1 year

1.5% 3 years

4.3% LT ave

Dovish outlook amongst central banks globally



Exchange rates (Rand spot rate and quarterly change)



US DOLLAR

R14.42

0.3%

The US Dollar not as strong due to mixed US economic data



BRITISH POUND

R18.79

2.6%

Sterling strength was a feature, as the likelihood of a hard Brexit diminished



EURO

R16.19

1.5%

The Euro slightly weaker due to economic growth concerns



Domestic performance drivers



HIGHLIGHTS

- The South African Reserve Bank kept interest rates unchanged at 6.75%, partly due to inflation which slowed to 4.1% in February;
- The much-anticipated credit review from Moody's delivered no change in credit rating or outlook;
- The South African equity market delivered one of the best quarters in some time, benefitting from improved global sentiment and a rally in commodity prices.



LOW POINTS

- Load shedding returned and progressed to stage 4, causing consumers and industrial operators much distress;
- The National Energy Regulator of South Africa (NERSA) announced a 9% electricity tariff increase, following Eskom's higher request;
- Further downward adjustments were made to economic growth by different institutions such as the International Monetary Fund, the National Treasury and the South African Reserve Bank.



Global performance drivers



HIGHLIGHTS

- The US government shutdown came to an end, and Trump seems to have moderated his behaviour over recent months;
- Improvement in relationships between the US and China, with the trade talks appearing to be constructive, and both sides suggesting real progress is being made;
- Even though the UK Parliament remained deadlocked over Brexit, it would appear that the probability of an economically damaging hard Brexit has significantly diminished.



LOW POINTS

- Disappointing economic data release and a deteriorating economic outlook, which saw the shift in central bank policy guidance;
- In March, the short end of the bond yield curve inverted, leading to an equity market sell off in that month and a rally in the bond markets. The inversion of the bond yield curve has historically been regarded as one of the early warning signs to trigger a recession;
- Returns from Europe remained weak, representing the epicentre of economic growth concerns and business contending with Brexit's uncertainty.

QUARTERLY REPORT: NEDGROUP INVESTMENTS XS GUARDED FUND OF FUNDS

as at 31 March 2019



Fund overview

MAX EQUITY

40%

TIME FRAME

min **3** years

BENCHMARK

Inflation **+3%**

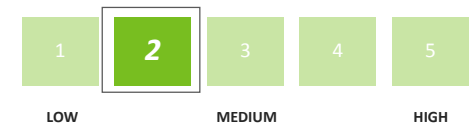
PEER GROUP

SA Multi-Asset
Low Equity

REGULATION 28

Compliant

RISK PROFILE



Fund costs (B)*

MANAGEMENT FEE
(excl. VAT)

0.85%

TOTAL
EXPENSE RATIO

1.11%

TRANSACTION
CHARGES

0.07%

TOTAL
INVESTMENT CHARGES

1.18%



Benefits of the XS range

COMPETITIVE
PRICING



DIVERSIFIED ACROSS
ASSET CLASSES



INVESTMENT
EXPERTS



PASSIVE AND ACTIVE
UNDERLYING INVESTMENTS



TAX
EFFICIENT



ONGOING
DUE DILIGENCE



*Both the Total Expense Ratio (TER) and Transaction Costs (TC) of the Fund are calculated on an annualised basis, beginning 01st of January 2016 and ending 31st December 2018.



XS Fund of Funds performance contribution – Q1 2019



CONTRIBUTORS THIS QUARTER

- The domestic equity carve-out did well for the quarter, led by the rand-hedges.
- The decision to maintain duration in the domestic bond carve-out paid off. SA bonds gained as (i) global bond yields decreased, (ii) the SARB keeping rates unchanged and (iii) Moody's maintaining the country's rating.
- The offshore exposure, including emerging markets, took part in the rally given the shift in central bank policy guidance that saw the Fed and the ECB stating that they no longer expect to raise interest rates in 2019.



DETRACTORS THIS QUARTER

- Limited exposure to the resource sector, which continued to do well over the period and the past year.
- Given disappointing economic activity and increased concerns around weaker SA GDP growth, performance of most SA domestic sectors was weak. This negatively impacted our allocation to the mid-small cap sector.
- Several holdings in our domestic property portion faced stock specific concerns (Delta, Rebosis and Arrowhead), over and above the general weak performance from the sector.

QUARTERLY REPORT: NEDGROUP INVESTMENTS XS GUARDED FUND OF FUNDS

as at 31 March 2019



Fund performance (B)

Q1 '19 RETURN

4.9%

Peer group average: 4.0%

YTD RETURN

4.9%

Peer group average: 4.0%

1YR ANNUALISED RETURN

8.3%

Peer group average: 6.7%

3YR ANNUALISED RETURN

6.3%

Peer group average: 5.2%

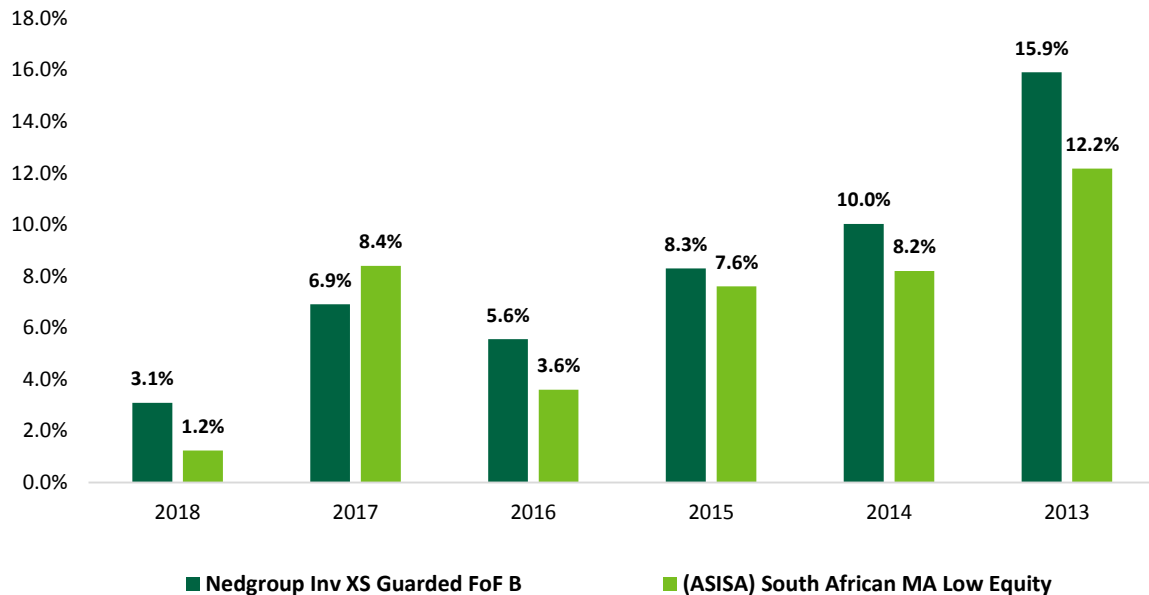
5YR ANNUALISED RETURN

7.2%

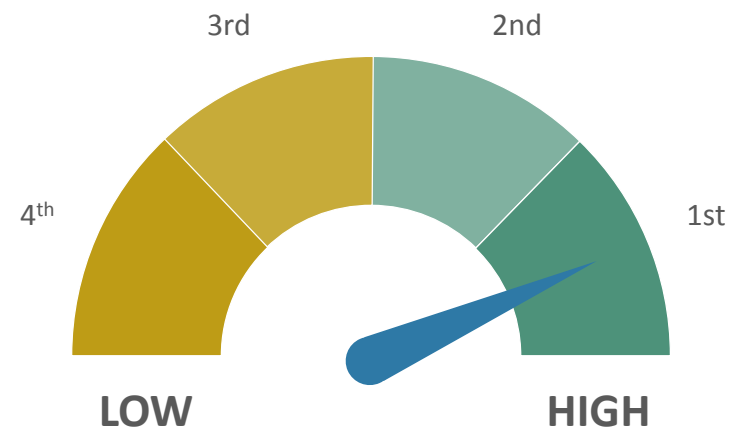
Peer group average: 6.3%



Calendar year performance



Peer group quartile ranking: 3Y



QUARTERLY REPORT: NEDGROUP INVESTMENTS XS GUARDED FUND OF FUNDS

as at 31 March 2019



Risk measures since inception

ROLLING 3YR RETURN

100%

Hit rate: outperforming peer group average

VOLATILITY

4.1%

SA equity market: 14.5%

MAX DRAWDOWN

-4.2%

SA equity market: -40.4%

SHARPE RATIO

0.6

SA equity market: 0.4

% POSITIVE MONTHS

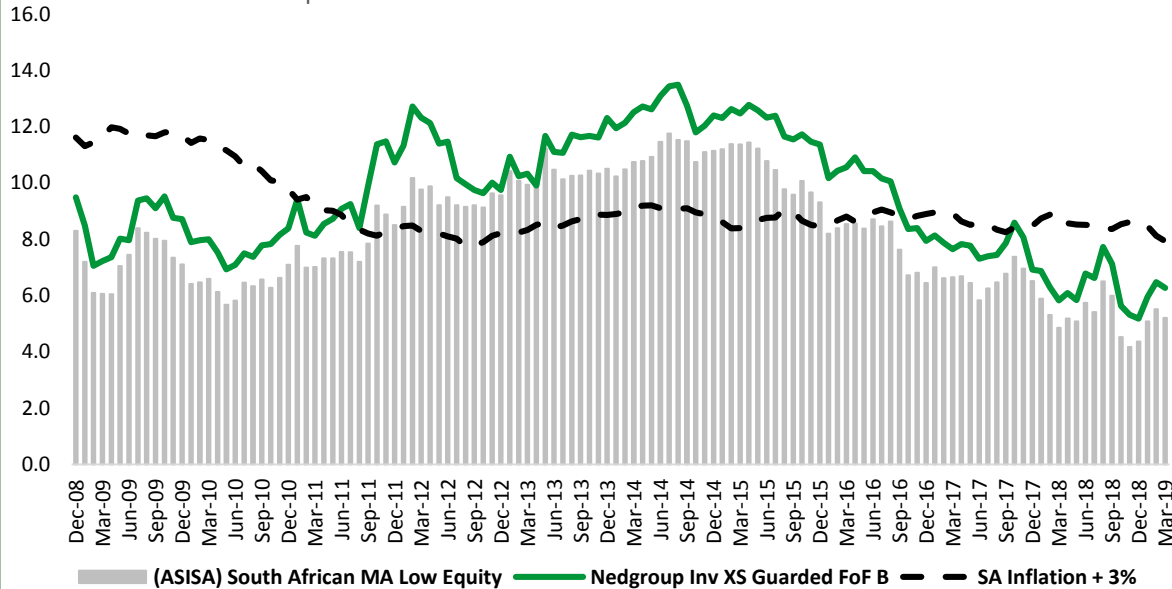
77%

SA equity market: 62%

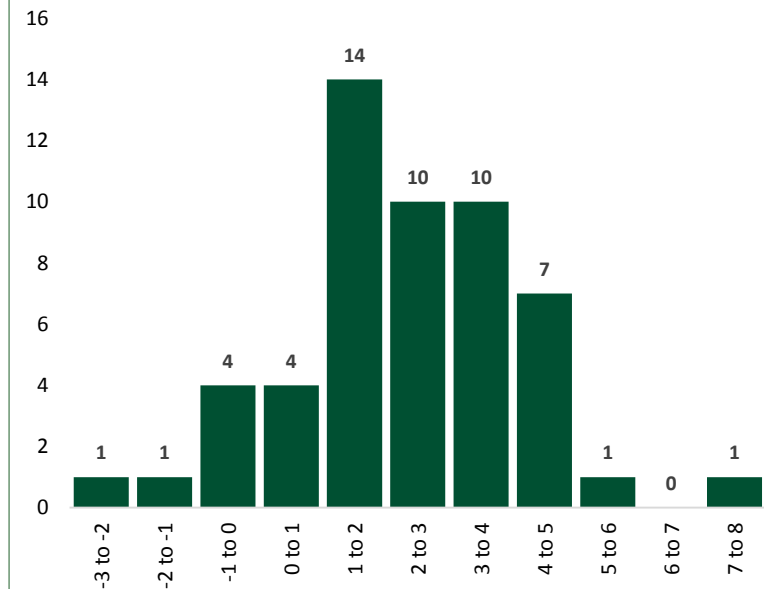


Rolling 3-year annualised return

Since inception to March 2019



Quarterly return distribution



QUARTERLY REPORT: NEDGROUP INVESTMENTS XS GUARDED FUND OF FUNDS

as at 31 March 2019



Performance across classes

| | A CLASS (ALL IN) | B CLASS (LISP) | C CLASS (CLEAN) | PEER GROUP | SA INFLATION + 3% |
|---------|------------------|----------------|-----------------|------------|-------------------|
| Q1 2019 | 4.5% | 4.9% | 4.8% | 4.0% | 1.2% |
| 1 YEAR | 6.7% | 8.3% | 7.9% | 6.7% | 7.2% |
| 3 YEAR | 4.7% | 6.3% | 5.9% | 5.2% | 7.9% |
| 5 YEAR | 5.7% | 7.3% | 6.9% | 6.3% | 8.2% |



Costs across classes*

| | MANAGEMENT FEE (excl. VAT) | FINANCIAL PLANNER | TOTAL EXPENSE RATIO | TRANSACTION CHARGES | TOTAL INVESTMENT CHARGES |
|------------------|----------------------------|-------------------|---------------------|---------------------|--------------------------|
| A Class (all-in) | 1.15% | 1.00% | 2.60% | 0.07% | 2.67% |
| B Class (LISP) | 0.85% | N/A | 1.11% | 0.07% | 1.18% |
| C Class (clean) | 1.15% | NA | 1.46% | 0.07% | 1.53% |

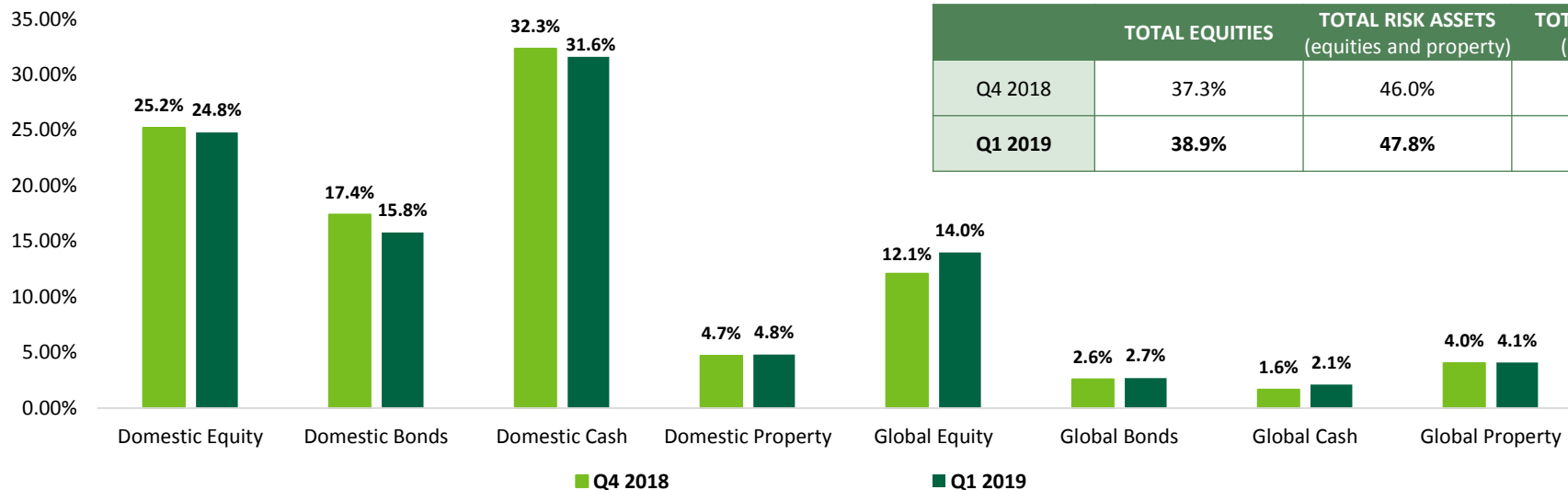
*Both the Total Expense Ratio (TER) and Transaction Costs (TC) of the Fund are calculated on an annualised basis, beginning 01st of January 2016 and ending 31st December 2018.

See money differently

www.nedgroupinvestmentsmultimanager.com



Asset allocation changes



| | TOTAL EQUITIES | TOTAL RISK ASSETS (equities and property) | TOTAL OFFSHORE (excl. Africa) |
|----------------|----------------|--|----------------------------------|
| Q4 2018 | 37.3% | 46.0% | 20.4% |
| Q1 2019 | 38.9% | 47.8% | 23.0% |



Summary of recent changes

- No active asset allocation decision was made over the first quarter of 2019.
- Any asset allocation differences shown above, for the Nedgroup Investments XS Guarded Fund of Funds, is as a result of market movements and minor trades conducted by the Investment Team to ensure that the portfolio is in line with our current house view and fund positioning.
- A healthy allocation to defensive assets remain whilst our neutral position to domestic bonds and domestic property is largely retained.
- The funds are well diversified across all asset classes, with a moderate risk positioning.

QUARTERLY REPORT: NEDGROUP INVESTMENTS XS GUARDED FUND OF FUNDS

as at 31 March 2019



Asset allocation

DOMESTIC EQUITY



24.8%

DOMESTIC PROPERTY



4.8%

DOMESTIC FIXED INTEREST



47.4%

FOREIGN EQUITY



14.0%

FOREIGN PROPERTY



4.1%

FOREIGN FIXED INTEREST



4.8%



Regional exposure



67.4%



9.6%



23.0%

PURE SA

RAND HEDGES

DIRECT FOREIGN



Top ten holdings (as a % of fund)



1.8%



1.2%



1.1%



1.1%



Standard Bank

1.0%



0.8%



0.7%



0.6%



0.6%



0.6%



Domestic asset class positioning



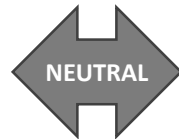
DOMESTIC EQUITY



24.8%

- Pockets of opportunity have opened up in the market, but are not without risks.
- Broadly balanced: rand-hedge exposure exists, with a meaningful tilt towards the domestic-facing companies.

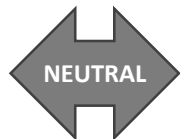
DOMESTIC PROPERTY



4.8%

- Neutral position retained. Preference for active management/stock selection.
- Remain invested in small/mid-sized domestically focused firms; with SAPY index heavyweights present via the enhanced tracker holding.

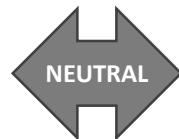
DOMESTIC BOND



15.8%

- Attractive yields and rewards for local risks, however mindful of global risk factors.
- Playing the interest rate cycle through our duration positioning given increased volatility.
- Overall underweight duration.

DOMESTIC CASH



31.6%

- The exposure to defensive assets remains prudent given the geopolitical risks that still exist.
- Provides consistent return profile.
- The healthy cash balance also provides optionality (dry powder) should opportunities arise.



Global asset class positioning



GLOBAL EQUITY



14.0%

- Room for earnings growth still exists; as well as the availability of reasonable levels of the equity/bond premium.
- International opportunities offering diversification, access to higher growth (e.g. EM) and risk adjusted returns, not just protection against rand weakness.

GLOBAL PROPERTY



4.1%

- Overweight commercial property companies focused on offices and data centres, but underweight those specialising in residential and retail.
- Also positioned for concerns around the impact of technology disruption.

GLOBAL BOND



2.7%

- Underweight global bonds in general. Global government bond yields declined on concerns that global growth is now decelerating.
- Minor exposure to EM bonds.

GLOBAL CASH



2.1%

- Cash positions remain as the underlying managers find compelling, idiosyncratic opportunities.



Domestic: fund manager exposures

Equity General:
17.5%



Small/Mid Cap
Equity: 4.9%



Passive Multi-
Asset: 19.0%



Property: 3.0%



Flexible Income:
37.6%



Global: fund manager exposures

Equity: 8.1%



Emerging Markets
Equity: 2.2%



Flexible Multi-
Asset: 3.5%



Property: 3.8%



The residual balance (out of 100%) is held as domestic cash to provide liquidity

See money differently



Disclaimer

Nedgroup Collective Investments (RF) Proprietary Limited is the company that is authorised in terms of the Collective Investment Schemes Control Act to administer the Nedgroup Investments unit trust portfolios. Unit trusts are generally medium to long term investments. The value of your investment may go down as well as up. Past performance is not necessarily a guide to future performance. Nedgroup Investments does not guarantee the performance of your investment and even if forecasts about the expected future performance are included you will carry the investment and market risk, which includes the possibility of losing capital. Unit trusts are traded at ruling prices and can engage in borrowing and scrip lending. Certain unit trust funds may be subject to currency fluctuations due to its international exposure. Nedgroup Investments has the right to close unit trust funds to new investors in order to manage it more efficiently. A schedule of fees and charges and details of our awards are available on request from Nedgroup Investments. A fund of funds may only invest in other unit trust funds, that levy their own charges, which could result in a higher fee structure. Nedgroup Investment Advisors (Pty) Ltd (the 'Investment Manager') an authorised as a financial services provider under the Financial Advisory and Intermediary Services Act (FSP No. 1652), is the appointed Investment Manager of the Management Company.

Certain Nedgroup Investments unit trust portfolios include international assets, whereby a change in the exchange rates may cause the value of those investments to rise and fall. Excessive withdrawals from the portfolio may place the portfolio under liquidity pressures and that in such circumstances a process of ring-fencing of withdrawal instructions and managed pay-outs over time may be followed.

Please note that Nedgroup Collective Investments (RF) Proprietary Limited is not authorised to and does not provide financial advice. This presentation is of a general nature and intended for information purposes only. It is not intended to address the circumstances of any investor and cannot be relied on as legal, tax or financial advice, either express or implied. Whilst we have taken all reasonable steps to ensure that the information in this document is accurate and current on an ongoing basis, Nedgroup Investments shall accept no responsibility or liability for any inaccuracies, errors or omissions relating to the information and topics covered in this presentation. Nedgroup Collective Investments (RF) Proprietary Limited is a member of the Association for Savings & Investment SA (ASISA).