

# XS Guarded Fund of Fund C

## As of 2019/09/30



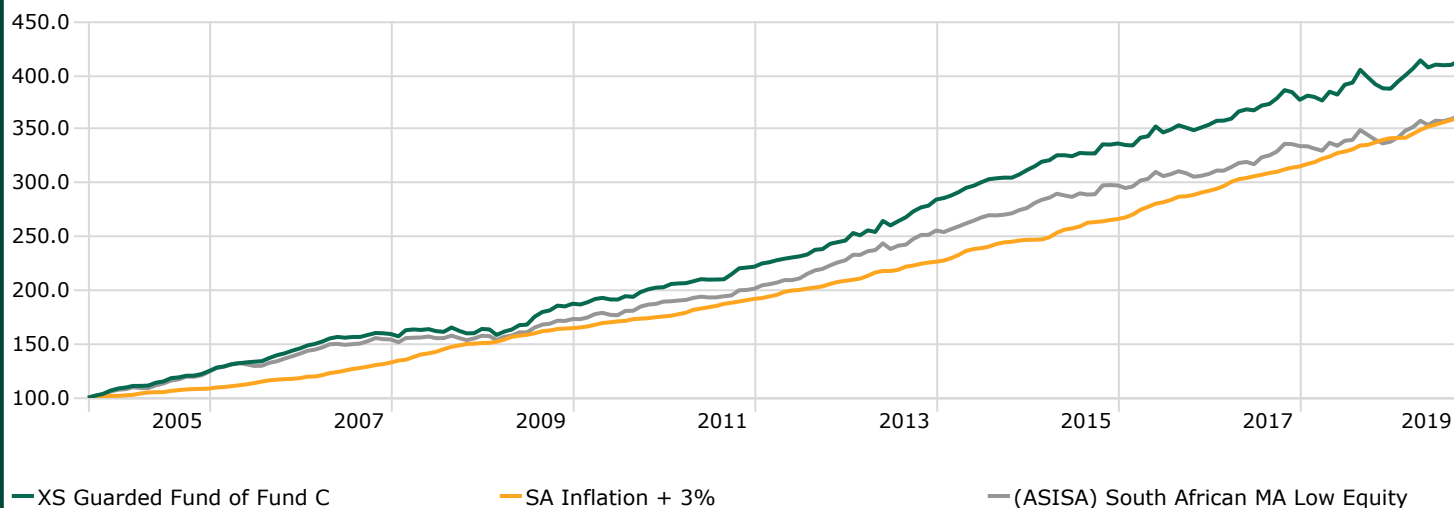
The investment objective of the XS Guarded Fund of Fund is as follows:

**Target return:** The solution aims to outperform local inflation by 2-4% (net of fees) per annum.

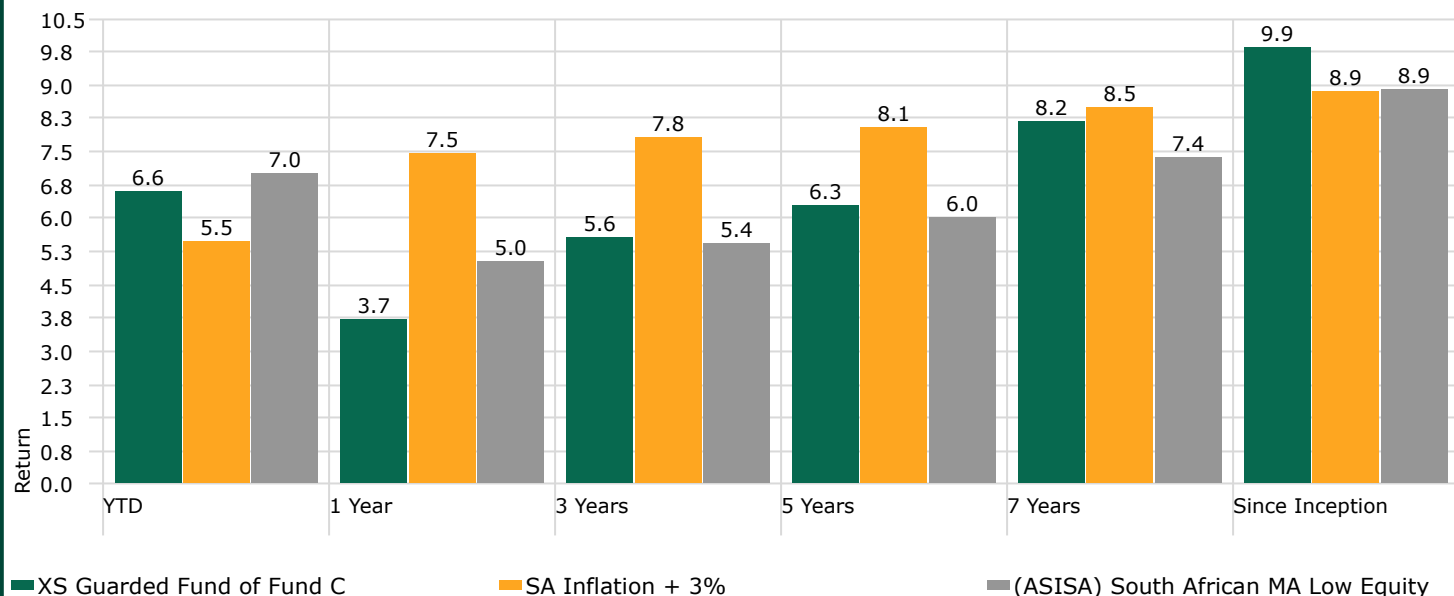
**Time horizon:** The minimum recommended time horizon for this solution to achieve its targeted return on a consistent basis is 3 years.

### Cumulative Investment Growth

Time Period: Since Common Inception (2004/09/01) to 2019/09/30



### Returns



### Calendar Year Returns

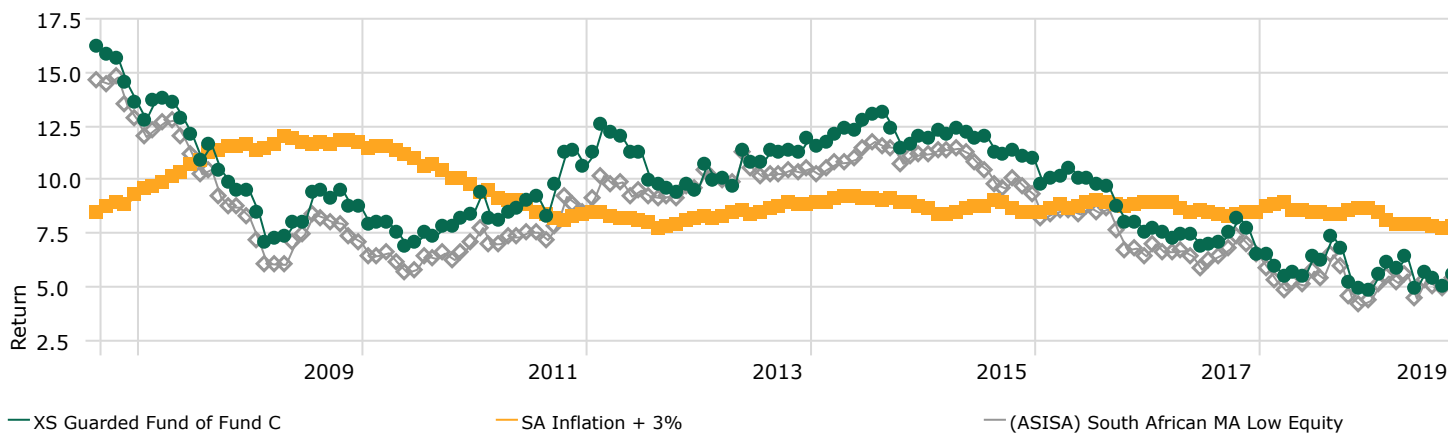
Currency: South African Rand

	YTD	2018	2017	2016	2015	2014
XS Guarded Fund of Fund C	6.61	2.7	6.5	5.2	7.9	9.65
SA Inflation + 3%	5.50	8.3	7.8	9.8	7.8	8.98
(ASISA) South African MA Low Equity	6.99	1.2	8.4	3.6	7.6	8.20

## Rolling 3 Year Return

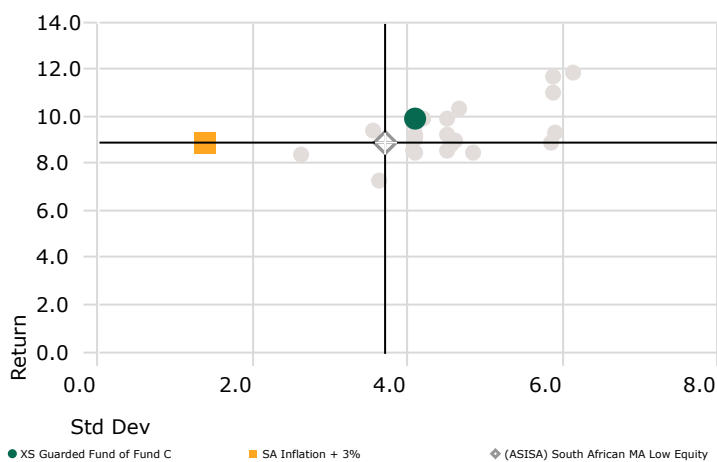
Time Period: Since Common Inception (2004/09/01) to 2019/09/30

Peer Group (1-100%): Open End Funds - ASISA Sector (South Africa) - (ASISA) South African MA Low Equity Rolling Window: 3 Years 1 Month shift



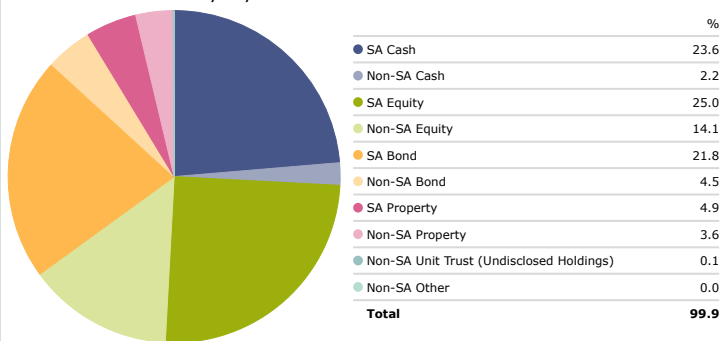
## Risk-Reward

Time Period: Since Common Inception (2004/09/01) to 2019/09/30



## Asset Allocation

Portfolio Date: 2019/06/30



## Drawdown

Time Period: Since Common Inception (2004/09/01) to 2019/09/30



## Risk

Time Period: Since Common Inception (2004/09/01) to 2019/09/30

	Std Dev	Max Drawdown	Best Quarter	Worst Quarter	Sharpe Ratio
XS Guarded Fund of Fund C	4.10	-4.33	7.90	-2.70	0.63
SA Inflation + 3%	1.39		4.13	0.75	1.22
(ASISA) South African MA Low Equity	3.72	-3.55	5.75	-1.83	0.46